



Product Catalog



Prices effective
November 2023
Prices Include GST

≡ Aquastrong Electric Pumps



Water Pump - Electric, Jet, 300W - 25mm (1")

\$139.00

Model: EJm40LB
Type: Cast Iron Jet Pump
Voltage: 230V / 50Hz
Power: 300W (0.4HP)
Inlet size: 25mm (1")
Outlet Size: 25mm (1")
Priming: Self Priming
Maximum Flow: 40L/min
Maximum PSI: 41.2
Minimum Head: 7m
Maximum Head: 29m
Maximum Suction: 9m
Pump Body: Cast Iron with E-coating
Impeller: PPO
Rotor: Welded Stainless Steel Shaft
Maximum Liquid Temperature: 40°C
Windings: Copper
Insulation Class: F
Protection Class: IPX4
Weight NW: 10.5kg

Pumps clean water or non aggressive liquids
Special anti rust treatment for pump body and support
High Quality Bearing
Build in thermal protector for single phase motor
Includes Power Cable and Plug
18 Month Warranty



Water Pump - Electric, Jet, + Pressure Switch, 370W - 25mm (1")

\$219.00

Model: EJM37SE
Type: Stainless Steel Jet Pump with Pressure Switch
Voltage: 230V / 50Hz
Power: 375W (0.5HP)
Inlet size: 25mm (1")
Outlet Size: 25mm (1")
Priming: Self Priming
Maximum Flow: 55L/min
Maximum PSI: 54.03
Minimum Head: 6m
Maximum Head: 38m
Maximum Suction: 9m
Pump Body: 304 Stainless Steel
Impeller: PPO
Rotor: Welded Stainless Steel Shaft
Maximum Liquid Temperature: 60°C
Windings: Copper
Insulation Class: F
Protection Class: IPX4
Weight NW: 5.8kg

Pumps clean water or non aggressive liquids
Special anti rust treatment for pump body and support
High Quality Bearing
Build in thermal protector for single phase motor
Includes Power Cable and Plug
24 Month Warranty



**Water Pump - Electric, Jet,
750W - 25mm (1")**

\$199.00

Model: EJM100LB
 Type: Cast Iron Jet Pump
 Voltage: 230V / 50Hz
 Power: 750W (1HP)
 Inlet size: 25mm (1")
 Outlet Size: 25mm (1")
 Priming: Self Priming
 Maximum PSI: 65.4
 Maximum Flow: 50L/min
 Minimum Head: 19.5m
 Maximum Head: 46
 Maximum Suction: 9m
 Pump Body: Cast Iron with E-coating
 Impeller: PPO
 Rotor: Welded Stainless Steel Shaft
 Maximum Liquid Temperature: 40°C
 Windings: Copper
 Insulation Class: F
 Protection Class: IPX4
 Weight NW: 16kg

Pumps clean water or non aggressive liquids
 Special anti rust treatment for pump body and support
 Build in thermal protector for single phase motor
 Includes Power Cable and Plug
 18 Month Warranty



**Water Pump - Electric, Jet +
Pressure Switch, 750W -
25mm (1")**

\$279.00

Model: EJM75SE
 Type: Stainless Steel Jet Pump with Pressure Switch
 Voltage: 230V / 50Hz
 Power: 750W (1HP)
 Inlet size: 25mm (1")
 Outlet Size: 25mm (1")
 Priming: Self Priming
 Maximum Flow: 65L/min
 Maximum PSI: 65.4
 Minimum Head: 6m
 Maximum Head: 46m
 Maximum Suction: 9m
 Pump Body: 304 Stainless Steel
 Impeller: PPO
 Rotor: Welded Stainless Steel Shaft
 Maximum Liquid Temperature: 60°C
 Windings: Copper
 Insulation Class: F
 Protection Class: IPX4
 Weight NW: 8.8kg

Pumps clean water or non aggressive liquids
 Special anti rust treatment for pump body and support
 High Quality Bearing
 Build in thermal protector for single phase motor
 Includes Power Cable and Plug
 24 Month Warranty

≡ Aquastrong Electric Pumps



Water Pump - Electric, Jet, 750W - 25mm (1")

\$209.00

Model: EJm101C
 Type: Stainless Steel Jet Pump
 Voltage: 230V / 50Hz
 Power: 750W (1HP)
 In: 5A
 C: 16uF
 Inlet size: 25mm (1")
 Outlet Size: 25mm (1")
 Priming: Self Priming
 Maximum Flow: 50L/min
 Maximum PSI: 65.4
 Minimum Head: 18m
 Maximum Head: 46m
 Maximum Suction: 9m
 Pump Body: 304 Stainless Steel
 Impeller: PPO
 Rotor: Welded Stainless Steel Shaft
 Maximum Liquid Temperature: 40°C
 Windings: Copper
 Insulation Class: F
 Protection Class: IPX4
 Weight NW: 9.4kg

Pumps clean water or non aggressive liquids
 Special anti rust treatment for pump body and support
 High Quality Bearing
 Build in thermal protector for single phase motor
 Includes Power Cable and Plug
 18 Month Warranty



Water Pump - Electric, Jet, 1100W - 25mm (1")

\$249.00

Model: EJWM/15M
 Type: Cast Iron Jet Pump
 Voltage: 230V / 50Hz
 Power: 1100W (1.5HP)
 Inlet size: 25mm (1")
 Outlet Size: 25mm (1")
 Priming: Self Priming
 Maximum Flow: 70L/min
 Maximum PSI: 73.9
 Maximum Head: 52m
 Maximum Suction: 9m
 Pump Body: Cast Iron with E-coating
 Impeller: PPO
 Rotor: Welded Stainless Steel Shaft
 Maximum Liquid Temperature: 40 Deg C
 Windings: Copper
 Insulation Class: F
 Protection Class: IPX4
 Weight NW: 14.25kg

Pumps clean water or non aggressive liquids
 Special anti rust treatment for pump body and support
 Build in thermal protector for single phase motor
 Includes Power Cable and Plug
 18 Month Warranty



**Water Pump - Electric,
Automatic Self-Priming
Pump, Hot Water, 750W -
25mm (1")**

\$239.00

Model: AQUA45
Type: Automatic self priming
Voltage: 230V / 50Hz
Power: 750W (1HP)
Maximum Flow: 50lpm
Maximum PSI: 64
Rated Head: 22m
Maximum Head: 45m
Maximum Suction: 8m
Pump Body: Cast Iron
Impeller: Brass
Shaft: 304 Stainless Steel
Maximum Liquid Temperature: 100°C
Windings: Copper
Insulation Class: B
Protection Class: IPX4
Weight NW: 13kg

Pumps clean water or non aggressive liquids
Anti Rust Treatment
High Quality Bearing
Waterless Shut Off Protection
Start Protection
Includes 2L Pressure Tank, Pressure Switch, Flow Sensor,
Power Cable and Plug
24 Month Warranty



**Water Pump—Variable
Speed, Hot Water, 25mm
(1")**

\$195.00

Model: AQUA SMART16
Type:
Voltage: 230V / 50Hz
Power:
Inlet size: 25mm (1")
Outlet Size: 25mm (1")
Priming: Self Priming
Maximum PSI:
Maximum Flow:
Minimum Head:
Maximum Head:
Maximum Suction:
Pump Body:
Impeller:
Rotor:
Maximum Liquid Temperature:
Windings:
Insulation Class:
Protection Class:
Weight NW: 1.85kg
Pump: 150mm (L) x 80mm (W) x 80mm (H)
Controller: 55mm (L) x 100mm (W) x 35mm (H)
Controller Cord Length: 1mtr

Pumps clean water or non aggressive liquids
Special anti rust treatment for pump body and support
Build in thermal protector for single phase motor
Includes Power Cable and Plug

≡ Aquastrong Electric Pumps



Water Pump—Variable Speed, Hot Water, 25mm (1")

\$1,250.00

Model: AQUA SMART45

Type:

Voltage: 230V / 50Hz

Power:

Inlet size: 25mm (1")

Outlet Size: 25mm (1")

Priming: Self Priming

Maximum PSI:

Maximum Flow:

Minimum Head:

Maximum Head:

Maximum Suction:

Pump Body:

Impeller:

Rotor:

Maximum Liquid Temperature:

Windings:

Insulation Class:

Protection Class:

Weight NW: 13.80kg

Dimensions: 450mm (L) x 200mm (W) x 330 (H)

Pumps clean water or non aggressive liquids

Special anti rust treatment for pump body and support

Build in thermal protector for single phase motor

Includes Power Cable and Plug

18 Month Warranty



Water Pump - Electric, Automatic Booster, 120W - 19mm (3/4")

\$105.00

Model: EBP25-15A-125

Type: Automatic Booster Pump

Voltage: 230V / 50Hz

Power: 120W

C: 5uF

In: 0.55A

Maximum Flow: 30lpm

Maximum Head: 15m

Speed: 2900 r/min

Pump Body: Stainless Steel, Brass & Aluminium

Impeller: Brass

Shaft: Stainless Steel

Maximum Liquid Temperature: 40°C

Insulation Class: B

Protection Class: IP44

Weight NW: 3.7kg

Pumps clean water or non aggressive liquids

Automatic / Manual Control

Anti Rust Body

Includes Flow Switch, Power Cable and Plug

12 Month Warranty



**Water Pump—Electric,
Automatic Booster, Hot
Water, 120W—25mm (1")**

\$120.00

Model: EBP25H-15A/125
Type: Automatic Booster Pump
Voltage: 230V / 50Hz
Power: 120W
C: 5uF
In: 0.55Amps
Maximum Flow: 30lpm
Maximum Head: 15m
Speed: 2900 r/min
Pump Body: Stainless Steel, Brass
Impeller: Brass
Shaft: Stainless Steel
Maximum Liquid Temperature: 100°C
Insulation Class: B
Protection Class: IP44
Weight NW: 3.90kg

Pumps clean water or non aggressive liquids
Automatic Flow Sensor / Manual Control
Brass Body
Includes Flow Switch, Power Cable and Plug
12 Month Warranty



**Water Pump - Electric,
Multi Stage Centrifugal,
1500W - 38x25mm**

\$389.00

Model: 2ECm25-160B
Type: Cast Iron Centrifugal Pump
Voltage: 230V / 50Hz
Power: 1500W (2HP)
Inlet size: 38mm (1.5")
Outlet Size: 25mm (1")
Priming: Not Self Priming
Maximum Flow: 160L/min
Maximum PSI: 79.6
Minimum Head: 20m
Maximum Head: 56m
Maximum Suction: 8m
Pump Body: Cast Iron with E-coating
Impeller: Brass / Stainless Steel
Rotor: Cold Rolled Sheet
Maximum Liquid Temperature: 40°C
Windings: Copper
Insulation Class: F
Protection Class: IPX4
Weight NW: 27kg

Pumps clean water or non aggressive liquids
Special anti rust treatment for pump body and support
High Quality Bearing
Build in thermal protector for single phase motor
Includes 15A Power Cable and Plug
18 Month Warranty



**Water Pump - Electric,
Deep Well Jet Pump,
750W - 32x25x25mm
(1.25x1x1")**

\$329.00

Model: EDPm370A
Type: Jet Pump for Deep Wells
Voltage: 230V / 50Hz
Power: 750W (1HP)
Maximum Flow: 35lpm
Maximum PSI: 85.3
Maximum Head: 60m
Maximum Suction: 15m
Pump Body: Cast Iron
Impeller: Brass
Shaft: 304 Stainless Steel
Maximum Liquid Temperature: 40°C
Windings: Copper
Insulation Class: F
Protection Class: IPX4
Weight NW: 18kg

Pumps clean water or non aggressive liquids
Anti Rust Treatment
High Quality Bearing
Includes 18L Pressure Tank, Pressure gauge, Injector, Brass
Foot Valve, Brass Tee.
Includes Power Cable and Plug
18 Month Warranty

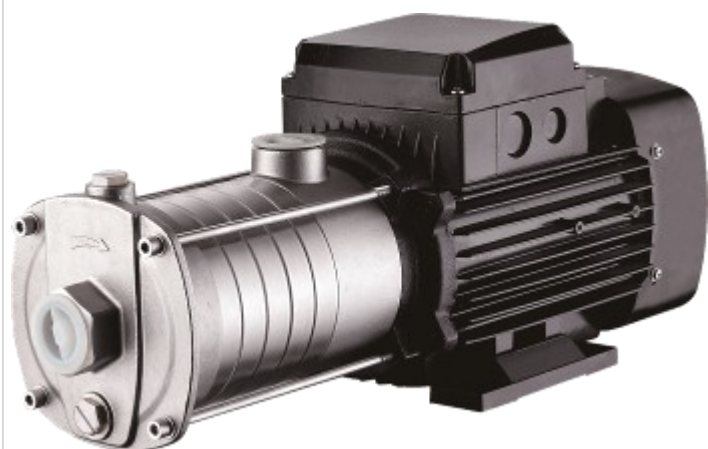


**Water Pump - Electric,
Deep Well Jet Pump,
1100W - 38x25x25mm
(1.25x1x1")**

\$495.00

Model: EDPm505A
Type: Jet Pump for Deep Wells
Voltage: 230V / 50Hz
Power: 1100W (1.5HP)
C: 30uF
In: 7.5A
Maximum Flow: 35lpm
Maximum PSI: 142
Maximum Head: 100m
Maximum Suction: 15m
Pump Body: Cast Iron
Impeller: Brass
Shaft: 304 Stainless Steel
Maximum Liquid Temperature: 40°C
Windings: Copper
Insulation Class: F
Protection Class: IPX4
Weight NW: 27.3kg

Pumps clean water or non aggressive liquids
Anti Rust Treatment
High Quality Bearing
Includes 18L Pressure Tank, Pressure gauge, Injector, Brass
Foot Valve, Brass Tee.
Includes Power Cable and Plug
18 Month Warranty



**Water Pump - Electric,
Multi Stage, 750W -
32x25mm (1.25"x1")**

\$559.00

Model: ECHSM4-40

Type: Stainless Steel Horizontal Multi Stage Pump

Voltage: 230V / 50Hz

Power: 750W (1HP)

Inlet size: 32mm (1.25")

Outlet Size: 25mm (1")

Priming: Not Self Priming

Maximum Flow: 117L/min

Maximum PSI: 51.2

Maximum Head: 36m

Maximum Suction: 8m

Pump Body: Stainless Steel / Cast Iron

Impeller: Stainless Steel

Maximum Liquid Temperature: 40°C

Windings: Copper

Insulation Class: F

Protection Class: IP55

Weight: 13.5kg

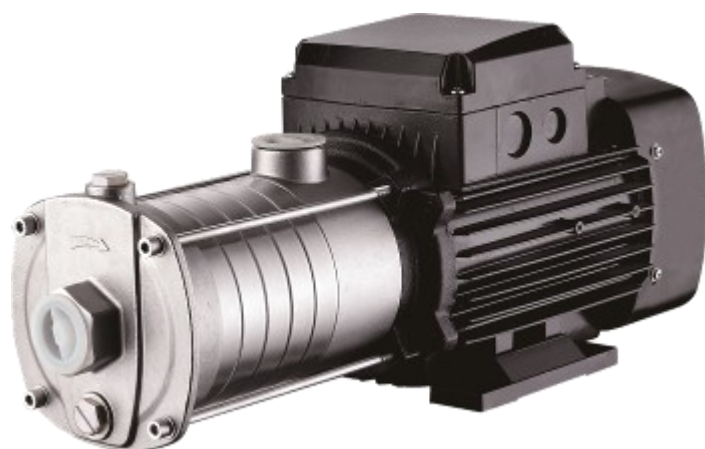
Pumps clean water or non aggressive liquids

Thermally Protected

Stainless Steel Body

Includes 10A Power Cable and Plug

24 Month Warranty



**Water Pump - Electric,
Multi Stage, 1100W -
32x25mm (1.25"x1")**

\$650.00

Model: ECHSM4-60

Type: Stainless Steel Horizontal Multi Stage Pump

Voltage: 230V / 50Hz

Power: 1100W (1.5HP)

Inlet size: 32mm (1.25")

Outlet Size: 25mm (1")

Priming: Not Self Priming

Maximum Flow: 117L/min

Maximum PSI: 78.2

Maximum Head: 55m

Maximum Suction: 8m

Pump Body: Stainless Steel / Cast Iron

Impeller: Stainless Steel

Maximum Liquid Temperature: 40°C

Windings: Copper

Insulation Class: F

Protection Class: IP55

Weight: 19.5kg

Pumps clean water or non aggressive liquids

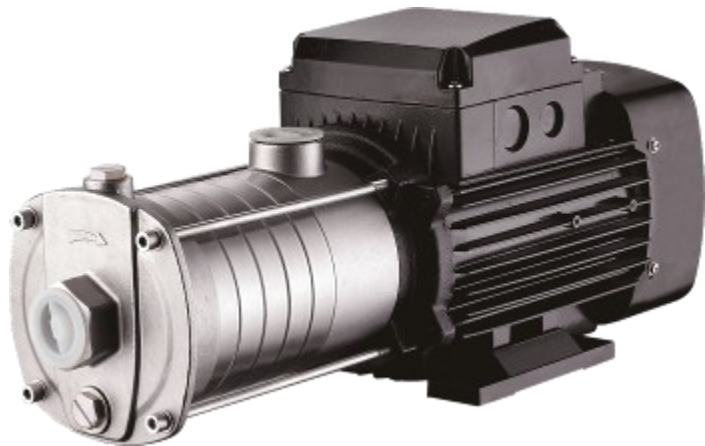
Thermally Protected

Stainless Steel Body

Includes 10A Power Cable and Plug

24 Month Warranty

Aquastrong Electric Pumps

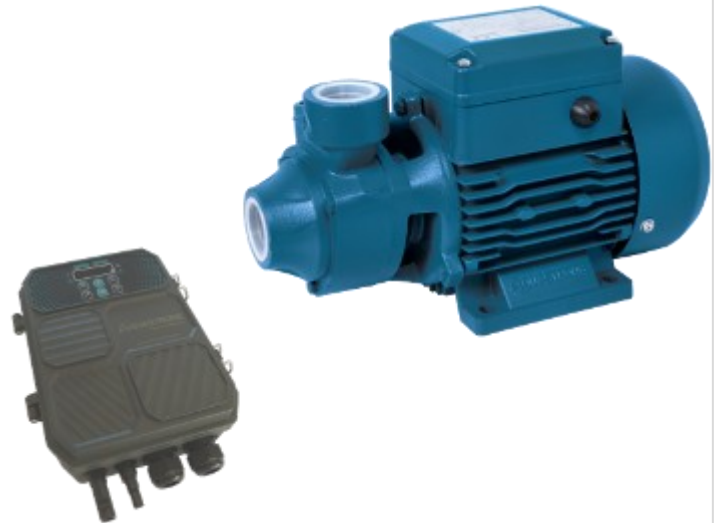


Water Pump - Electric, Multi Stage, 2200W - 38x32mm (1.5"x1.25")

\$1,149.00

Model: ECHSM10-50
 Type: Stainless Steel Horizontal Multi Stage Pump
 Voltage: 230V / 50Hz
 Power: 2200W (3.0HP)
 Inlet size: 38mm (1.5")
 Outlet Size: 32mm (1.25")
 Priming: Not Self Priming
 Maximum Flow: 200L/min
 Maximum PSI: 67.9
 Maximum Head: 47.8m
 Maximum Suction: 8m
 Pump Body: Stainless Steel / Cast Iron
 Impeller: Stainless Steel
 Maximum Liquid Temperature: 40°C
 Windings: Copper
 Insulation Class: F
 Protection Class: IP55
 Weight: 30kg

Pumps clean water or non aggressive liquids
 Thermally Protected
 Stainless Steel Body
 Includes 10A Power Cable and Plug
 24 Month Warranty



Water Pump - Solar, Peripheral Pump - 750W DC, 25mm (1") + Controller

\$789.00

Model: EDP3-65-72-750
 Type: Cast Iron Peripheral Pump
 Voltage: 72V DC
 Optimum Input Voltage: 90-120V DC
 Power: 750W (1HP)
 In: <17A
 Inlet size: 25mm (1")
 Outlet Size: 25mm (1")
 Priming: Not Self Priming
 Maximum Flow: 50L/min
 Maximum PSI: 92
 Maximum Head: 65m
 Maximum Suction: 6m
 Pump Body: Cast Iron
 Impeller: Brass
 Rotor: Welded Stainless Steel Shaft
 Motor: Permanent Magnet Brushless Motor (PMBL)
 Maximum Liquid Temperature: 40 Deg C
 Windings: Copper
 Insulation Class: F
 Protection Class: IP68
 Weight GW: 11.6kg

Includes: MPPT Inverter Controller + Pump + Cable Joining
 Kit. (Solar Separate), 24 Month Warranty

3SGD2.0-150-72-750 + 180W
 Solar Panels x 6 (6 x Series)

\$1959.00



**Water Pump - Solar,
Submersible Pump -
1100W, 50mm (2") - DC**

\$299.00

Model: QDX8-181.1DC
Type: Submersible Pump
Voltage: 110-150V DC
Power: 1100W (1.5HP)
Outlet Size: 50mm
Maximum Immersion: 30m
Maximum Diameter Particle: 0.5mm
Maximum Flow: 300L/min
Maximum PSI: 40
Maximum Head: 26m
Impeller Stage: 1
Pump Body: Cast Iron
Impeller: Aluminium
Motor: Permanent Magnet Brushless Motor (PMBL)
Shaft: Stainless Steel
Maximum Liquid Temperature: 50°C
Windings: Copper
Pump Cord Length: 8m
Protection Class: IPX4
Size: 180(L) x 230(W) x 190(H)mm
Weight NW: 13.75kg

12 Month Warranty
No solar controller required. (Solar Separate)

QDX8-181.1DC +
Solar Panel-460W x 3 (3 x Series)

\$2,096.00



**Water Pump - Solar,
Submersible Borehole, 210W
DC - 19mm (3/4") + Controller**

\$719.00

Model: 3SGDC1.2-77-36-210
Type: Submersible Borehole Pump
Voltage: 36V DC
Optimum Input Voltage: 30-48V DC
Power: 210W (0.28HP)
Pump Diameter: 76mm
Maximum Immersion: 30m
Maximum Flow: 20L/min
Maximum PSI: 109
Maximum Head: 77m
Impeller Stage: 1
Pump Body: Stainless Steel
Impeller: Stainless Steel + Rubber
Shaft: Stainless Steel
Motor: Permanent Magnet Brushless Motor (PMBL)
Maximum Liquid Temperature: 40°C
Windings: Copper
Pump Cord Length: 1.2m
Insulation Class: F
Protection Class: IP68
Weight GW: 8.75kg

Includes: MPPT Inverter Controller + Pump + Cable Joining
Kit. (Solar Separate)
24 Month Warranty

3SGD2.0-150-72-750 + 180W
Solar Panels x 2 (2 x Series)

\$1,109.00

≡ Aquastrong Electric Pumps



Water Pump - Solar, Submersible Borehole, 750W DC - 19mm (3/4") + Controller

\$779.00

Model: 3SGD2.0-150-72-750
 Type: Submersible Borehole Pump
 Voltage: 72V DC
 Optimum Input Voltage: 90-120V DC
 Power: 750W (1HP)
 Pump Diameter: 76mm
 Maximum Immersion: 30m
 Maximum Flow: 33L/min
 Maximum PSI: 213
 Maximum Head: 150m
 Impeller Stage: 1
 Pump Body: Stainless Steel
 Impeller: Stainless Steel + Rubber
 Shaft: Stainless Steel
 Motor: Permanent Magnet Brushless Motor (PMBL)
 Maximum Liquid Temperature: 40°C
 Windings: Copper
 Pump Cord Length: 1.8m
 Insulation Class: F
 Protection Class: IP68
 Weight GW: 8.75kg

Includes: MPPT Invertor Controller + Pump + Cable Joining
 Kit. (Solar Separate)
 24 Month Warranty

3SGD2.0-150-72-750 + 180W
 Solar Panels x 6 (6 x Series)

\$1,949.00



Solar Panel - Monocrystalline, 180W

\$195.00

Model: Solarpanel-180W
 Maximum Power (Pmax): 180W
 Maximum Power Voltage (Vmp): 19.47V
 Maximum Power Current (Imp): 9.25A
 Open Circuit Voltage (Voc): 23.85V
 Short Circuit Current (Isc): 10.13A
 Power Tolerance: +/-5%
 Max System Voltage: 1000V
 Size: 1485(L) x 668(W) x 30(H)mm
 Weight NW: 10.4kg



**Solar Panel -
Monocrystalline, 460W**

\$559.00

Model: Solarpanel-460W

Maximum Power (Pmax): 460W

Maximum Power Voltage (Vmp): 44.2V

Maximum Power Current (Imp): 10.42A

Open Circuit Voltage (Voc): 53.3V

Short Circuit Current (Isc): 10.95A

Power Tolerance: +/-3%

Max System Voltage: 1500V

Size: 2005(L) x 1105(W) x 35(H)mm

Weight NW: 23.6kg

≡ Aquastrong Electric Pumps



Water Pump - Electric, Submersible Borehole, 370W - 19.05mm (3/4")

\$359.00

Model: 2SAM1/44
Type: Submersible Borehole Pump
Voltage: 230V / 50Hz
Power: 370W (0.5HP)
Minimum Well Diameter: 54mm
Maximum Sand Content: 0.3%
Maximum Immersion: 80m
Maximum Flow: 27L/min
Maximum PSI: 65
Maximum Head: 46m
Impeller Stage: 44
Pump Body: Stainless Steel
Impeller: POM
Shaft: Stainless Steel
Maximum Liquid Temperature: 35°C
Windings: Copper
Pump Cord Length: 40cm
Insulation Class: F
Protection Class: IP68
Weight NW: 10.55kg
Controller Box Weight NW: 0.70kg

Pumps clean water or non aggressive liquids
Includes Controller with Plug
24 Month Warranty



Water Pump - Electric, Submersible Borehole, 1100W - 38mm (1.5")

\$375.00

Model: 4SAM3/18
Type: Submersible Borehole Pump
Voltage: 230V / 50Hz
Power: 1100W (1.5HP)
Minimum Well Diameter: 95mm (3.7")
Maximum Sand Content: 0.3%
Maximum Immersion: 120m
Maximum Flow: 100L/min
Maximum PSI: 178
Maximum Head: 125m
Impeller Stage: 18
Pump Body: Stainless Steel
Impeller: POM
Shaft: Stainless Steel
Maximum Liquid Temperature: 35°C
Windings: Copper
Pump Cord Length: 0.95m
Insulation Class: F
Protection Class: IP68
Weight NW: 19.55kg
Controller Box Weight: 0.70kg

Pumps clean water or non aggressive liquids
Includes Controller with Plug
18 Month Warranty



**Water Pump - Electric,
Submersible Borehole,
750W - 38mm (1.5")**

\$329.00

Model: 3.5SAm3/13
 Type: Submersible Borehole Pump
 Voltage: 230V / 50Hz
 Power: 750W (1HP)
 Minimum Well Diameter: 95mm (3.7")
 Maximum Sand Content: 3%
 Maximum Immersion: 120m
 Maximum Flow: 100L/min
 Maximum PSI: 102
 Maximum Head: 72m
 Impeller Stage: 11
 Pump Body: Stainless Steel
 Impeller: POM
 Shaft: Stainless Steel
 Maximum Liquid Temperature: 35 Deg C
 Windings: Copper
 Pump Cord Length: 0.95m
 Insulation Class: F
 Protection Class: IP68
 Weight NW: 21.15kg
 Controller Box Weight NW: 0.70kg

Pumps clean water or non aggressive liquids
 Includes Controller with Plug
 24 Month Warranty



**Water Pump - Electric,
Submersible Borehole,
1500W - 38mm (1.5")**

\$425.00

Model: 3.5SAm3/23
 Type: Submersible Borehole Pump
 Voltage: 230V / 50Hz
 Power: 1500W (2HP)
 Minimum Well Diameter: 95mm (3.7")
 Maximum Sand Content: 3%
 Maximum Immersion: 120m
 Maximum Flow: 100L/min
 Maximum PSI: 176
 Maximum Head: 124m
 Impeller Stage: 23
 Pump Body: Stainless Steel
 Impeller: POM
 Shaft: Stainless Steel
 Maximum Liquid Temperature: 35 Deg C
 Windings: Copper
 Pump Cord Length: 1.25m
 Insulation Class: F
 Protection Class: IP68
 Weight NW: 14.20kg
 Controller Box Weight NW: 0.70kg

Pumps clean water or non aggressive liquids
 Includes Controller with Plug
 24 Month Warranty

≡ Aquastrong Electric Pumps



Water Pump - Electric, Submersible Borehole, 1100W - 38mm (1.5")

\$375.00

Model: 4SAM3/18
Type: Submersible Borehole Pump
Voltage: 230V / 50Hz
Power: 1100W (1.5HP)
Minimum Well Diameter: 95mm (3.7")
Maximum Sand Content: 3%
Maximum Immersion: 120m
Maximum Flow: 100L/min
Maximum PSI: 172
Maximum Head: 125m
Impeller Stage: 18
Pump Body: Stainless Steel
Impeller: POM
Shaft: Stainless Steel
Maximum Liquid Temperature: 35 Deg C
Windings: Copper
Pump Cord Length: 0.95m
Insulation Class: F
Protection Class: IP68
Weight NW: 19.55kg
Controller Box Weight NW: 0.70kg

Pumps clean water or non aggressive liquids
 Includes Controller with Plug
 24 Month Warranty



Sewerage Pump - Electric, Submersible, 250W - 38mm (1.5")

\$195.00

Model: ESSWM30A
Type: Submersible Sewerage pump
Voltage: 230V / 50Hz
Power: 272W (0.37HP)
Outlet Size: 38mm
Maximum Immersion: 5m
Maximum Diameter Particle: 15mm
Liquid PH Value: 4-10
Maximum Flow: 215L/min
Maximum PSI: 13.5
Maximum Head: 9.5m
Pump Body: Cast Iron / Stainless Steel
Impeller: Stainless Steel
Shaft: Stainless Steel
Maximum Liquid Temperature: 40°C
Windings: Copper
Insulation Class: F
Protection Class: IP68
Size: 221(L) x 158(W) x 362(H)mm
Weight NW: 9.45kg

Includes Float Switch & Lowering Rope
 Includes 6m Power Cable (Excludes Plug)
 24 Month Warranty



**Sewerage Pump - Electric,
Submersible, 1100W -
50mm (2")**

\$389.00

Model: ESSWM150A
Type: Submersible Sewerage pump
Voltage: 230V / 50Hz
Power: 1100W (1.5HP)
Outlet Size: 50mm
Maximum Immersion: 5m
Maximum Diameter Particle: 30mm
Liquid PH Value: 4-10
Maximum Flow: 450L/min
Maximum PSI: 20.6
Maximum Head: 14.5m
Pump Body: Cast Iron / Stainless Steel
Impeller: Stainless Steel
Shaft: Stainless Steel
Maximum Liquid Temperature: 40°C
Windings: Copper
Insulation Class: F
Protection Class: IP68
Size: 269(L) x 186(W) x 426(H)mm
Weight NW: 16.8kg

Includes Float Switch & Lowering Rope
Includes 10m Power Cable and Plug
24 Month Warranty



**Sewerage Pump - Electric,
Submersible (Cutter),
1100W - 50mm (2")**

\$449.00

Model: ESSWM150DA
Type: Submersible Cutter Sewerage pump
Voltage: 230V / 50Hz
Power: 1100W (1.5HP)
Outlet Size: 50mm
Maximum Immersion: 5m
Liquid PH Value: 4-10
Maximum Flow: 442L/min
Maximum PSI: 21.3
Maximum Head: 15m
Pump Body: Cast Iron / Stainless Steel
Impeller: Stainless Steel
Shaft: Stainless Steel
Cutter Blade: Stainless Steel
Maximum Liquid Temperature: 40°C
Windings: Copper
Insulation Class: F
Protection Class: IP68
Size: 269(L) x 186(W) x 426(H)mm
Weight NW: 17.4kg

Includes Float Switch & Lowering Rope
Includes 10m Power Cable and Plug
24 Month Warranty

≡ Aquastrong Electric Pumps



Water Pump—Electric, Garden Submersible, 370W - 25mm (1")

\$95.00

Model: EPSM50A

Type:

Voltage: 230V / 50Hz

Power:

Outlet Size:

Maximum Immersion:

Maximum Diameter Particle:

Maximum Flow:

Maximum PSI:

Maximum Head:

Impeller Stage:

Pump Body:

Impeller:

Shaft:

Maximum Liquid Temperature:

Windings:

Insulation Class:

Protection Class:

Size:

Weight NW: 4.2kg

Size: 135mm (L) x 135(W) x 260 (H)mm

Cord Length: 2.5mtrs (without plug)



Water Pump - Electric, Garden Submersible, 550W - 32mm (1.25")

\$95.00

Model: EKS-550PW

Type: Garden Multistage Submersible

Voltage: 230V / 50Hz

Power: 550W (0.7HP)

Outlet Size: 32mm

Maximum Immersion: 7m

Maximum Diameter Particle: 35mm

Maximum Flow: 175L/min

Maximum PSI: 10

Maximum Head: 7m

Impeller Stage: 1

Pump Body: Plastic

Impeller: Plastic

Shaft: Stainless Steel Welded Shaft

Maximum Liquid Temperature: 35°C

Windings: Copper

Insulation Class: IPX8/F

Protection Class: IPX8

Size: 326(L) x 225(W) x 155(H)mm

Weight NW: 20.5kg

Suitable for Sewage water

High Strength Engineering Pump Housing

Build in Thermal Protector

Includes Float Switch

Includes Elbow Fitting

Includes 10m Power Cable and Plug

12 Month Warranty



**Water Pump - Electric,
Garden Submersible,
750W - 32mm (1.25")**

\$120.00

Model: EKS-750S
 Type: Garden Multistage Submersible
 Voltage: 230V / 50Hz
 Power: 750W (1HP)
 Outlet Size: 32mm
 Maximum Immersion: 7m
 Maximum Diameter Particle: 5mm
 Maximum Flow: 167L/min
 Maximum PSI: 12.8
 Maximum Head: 9m
 Impeller Stage: 1
 Pump Body: Stainless Steel
 Impeller: Plastic
 Shaft: Stainless Steel
 Maximum Liquid Temperature: 35°C
 Windings: Copper
 Insulation Class: F
 Protection Class: IPX8
 Size: 345(L) x 155(W) x 155(H)mm
 Weight NW: 31kg

Suitable for clean water transfer
 Fitted with Automatic Float Switch
 Build in Thermal Protector
 Includes 10m Power Cable and Plug
 12 Month Warranty



**Water Pump - Fountain /
Pond - 55W**

\$64.95

Model: EKF-55P
 Voltage: 230V / 50Hz
 Power: 55W
 Outlet Size: 19mm (0.75")
 Maximum Flow: 33.3L/min
 Maximum Head: 2.3m
 Maximum Liquid Temperature: 35°C
 Weight: 2.05kg
 Size: 220(L)x200(W)x135(H)

Includes 10m Power Cable and Plug
 12 Month Warranty



**Water Pump - Electric,
Garden Jet, 800W - 25mm
(1")**

\$159.00

Model: EKJ-802S

Type: Garden Jet Pump

Power: 800W (1.1HP)

Inlet size: 25mm (1")

Outlet Size: 25mm (1")

Maximum PSI: 56.9

Maximum Flow: 61L/min

Maximum Head: 40m

Maximum Suction: 7m

Pump Body: Stainless Steel

Impeller: Plastic

Rotor: Stainless Steel Fabricated Shaft

Maximum Liquid Temperature: 35°C

Windings: Aluminium

Insulation Class: F

Protection Class: IPX4

Size: 330(L) x 200(W) x 215(H)mm

Weight NW: 6.5kg

Pumps clean water or non aggressive liquids

Build in thermal protector for single phase motor

Ergonomic Handle

Includes 1.5M Power Cable and Plug

12 Month Warranty



**Water Filter - Inline, 1L -
25mm (1")**

\$24.95

*Model: WF-01B
Inlet/Outlet: 1" x 1"
Capacity: 1L
Max. Pressure: 5 bar
Max. Temp.: 35°C
Micron: 45um (approx.)
Inlet thread: female brass
Weight: 0.75kg*

*Protect your pump from sediment and debris
Includes male thread to male thread fittings
12 Month Warranty*



**Water Filter - Inline, 2L -
25mm (1")**

\$29.95

*Model: WF-02B
Inlet/Outlet: 1" x 1"
Capacity: 2L
Max. Pressure: 5 bar
Max. Temp.: 35°C
Micron: 45um (approx.)
Inlet thread: female brass
Weight: 1kg*

*Protect your pump from sediment and debris
Includes male thread to male thread fittings
12 Month Warranty*

≡ Aquastrong Electric Pumps



Water Pump - Electric, Pressure Switch Controller

\$55.00

Model: EPS-01
Voltage: 230V / 50Hz
Max. Power: 1.1KW
Inductive Load Max.: 10A
Max. Temp.: 60°C
Start Pressure 1.5 Bar
Max. Pressure 10 Bar
IP Rating: IP65
Input: 25mm (1")
Output: 25mm (1")

Includes 1.5m Power Cable and 10A Plug
18 Month Warranty



Water Pump - Electric - Pressure Switch Controller

\$79.95

Model: EPS-06
Voltage: 230V / 50Hz
Max. Power: 2.2KW
Inductive Load Max.: 16A
Max. Temp.: 60°C
Start Pressure 1.5 Bar
Max. Pressure 10 Bar
IP Rating: IP65
Input: 25mm (1")
Output: 25mm (1")

Includes 1.5m Power Cable and 10A Plug
18 Month Warranty



**Water Pump - Pressure
Tank, Vertical - 24L**

\$69.00

Model: 24VTT
Type: Vertical Pressure Tank
Membrane: EPDM
Thread: G1
Min. Temp.: 0°C
Max. Temp.: 99°C
Pre Charge: 1.6 Bar (23.2PSI)
Max. Working Pressure: 8 Bar (116PSI)
Overall Size: 270(L) x 270(W) x 252(H)mm



**Water Pump - Pressure
Tank, Horizontal - 24L**

\$74.95

Model: 24CTT
Type: Horizontal Pressure Tank
Membrane: EPDMT
Thread: G1
Min. Temp.: 0°C
Max. Temp.: 99°C
Pre Charge: 1.6 Bar (23.2PSI)
Max. Working Pressure: 8 Bar (116PSI)
Weight NW: 4.90kg
Overall Size: 520mm L x 300mm (W) x 290mm (H)

≡ *Aquastrong Electric Pumps*



**Water Pump - Pressure
Tank, Horizontal - 100L**

\$189.00

*Model: 100CTT
Type: Horizontal Pressure Tank
Membrane: EPDMT
Thread: G1
Min. Temp.: 0°C
Max. Temp.: 99°C
Pre Charge: 1.6 Bar (23.2PSI)
Max. Working Pressure: 8 Bar (116PSI)
Overall Size: 710(L) x 460(W) x 500(H)mm*



**Water Pump - Pressure
Tank, Vertical - 100L
(Italian Membrane)**

\$349.00

*Model: H100FTT
Type: Vertical Pressure Tank
Membrane: EPDM (Made in Italy)
Litres: 100L
Thread: G1 (1") BSP
Min. Temp.: -10°C
Max. Temp.: 100°C
Pre Charge: 2 Bar (29PSI)
Max. Working Pressure: 10 Bar (145PSI)
Overall Size: 445(L) x 440(W) x 970(H)mm
Weight: 19.5kg*



**Water Pump - Pressure
Tank, Vertical - 200L
(Italian Membrane)**

\$799.00

Model: H200FTT

Type: Vertical Pressure Tank

Membrane: EPDM (Made in Italy)

Litres: 200L

Thread: 31.75mm (1 1/4") BSP

Min. Temp.: -10°C

Max. Temp.: 100°C

Pre Charge: 4 Bar (58PSI)

Max. Working Pressure: 10 Bar (145PSI)

Overall Size: 730(L) x 630(W) x 1020(H)mm

Weight: 39kg



**Water Pump - Pressure
Tank, Vertical - 300L
(Italian Membrane)**

\$1,195.00

Model: H300FTT

Type: Vertical Pressure Tank

Membrane: EPDM (Made in Italy)

Litres: 300L

Thread: 31.75mm (1 1/4") BSP

Min. Temp.: -10°C

Max. Temp.: 100°C

Pre Charge: 4 Bar (58PSI)

Max. Working Pressure: 10 Bar (145PSI)

Overall Size: 760(L) x 720(W) x 1260(H)mm

Weight: 58.50kgg

Aquastrong Electric Pumps



Flexi Braided Stainless Steel Hose - Length 440mm - 25mm, (1")

\$16.95

Model: FH44-03
Material: Stainless Steel
Diameter: 25mm (1")
Thread: G1
Length: 440mm
Input Male Thread
Output Female Thread
Includes Stainless Steel intake filter



Three Way Tee - Brass - 25mm (1")

\$8.95

Model: 3V80
Thread: G1
Length: 70mm
Input Male Thread: 25mm (1") x 1
Output Female Thread: 25mm (1") x 2
Weight NW: 0.20kg



Flexi Braided Stainless Steel Hose - Length 1000mm - 25mm, (1")

\$23.95

Model: FH100-03
Material: Stainless Steel
Diameter: 25mm (1")
Thread: G1
Length: 1000mm
Input Male Thread
Output Female Thread
Includes Stainless Steel intake filter



Check Valve - Brass, Female Thread - 15mm (1/2")

\$7.95

Model: FV15
Material: Brass
Diameter: 15mm (1/2")
Shutter: Brass
Input Female Thread
Output Female Thread
Includes Stainless Steel intake filter
Diameter: 4mm



**Check Valve - Brass,
Female Thread - 20mm**

\$10.95

Model: FV20
Material: Brass
Diameter: 20mm (3/4")
Shutter: Brass
Input Female Thread
Output Female Thread

Includes Stainless Steel intake filter



**Check Valve - Brass,
Male Thread - 25mm (1")**

\$12.95

Model: FV25M
Material: Brass
Diameter: 25mm (1")
Shutter: Brass
Input Male Thread
Output Female Thread

Includes Stainless Steel intake filter



**Check Valve - Brass,
Female Thread - 25mm (1")**

\$11.95

Model: FV25
Material: Brass
Diameter: 25mm (1")
Shutter: Brass
Input Female Thread
Output Female Thread

Includes Stainless Steel intake filter



**Check Valve - Brass,
Female Thread - 32mm
(1 1/4")**

\$19.95

Model: FV32
Material: Brass
Diameter: 32mm (1 1/4")
Shutter: Brass
Input Female Thread
Output Female Thread

Includes Stainless Steel intake filter



Submersible Pump - Cable Joining Kit

\$9.95

Model: SUBMERSIBLE PUMP—CABLE JOINING KIT
1" 2 x Female Thread
1" 1 x Male Thread
Heat Shrink: 24.5cm (L) x 3cm (W)
Size: 160(L) x 140(W) x 40 (H)mm
Weight NW: 0.05kg



Float Switch - 0.55M

\$9.95

Model: EF-01
Material: Plastic
Length: 0.55mm
3 x 1mm² wires



CONTACT US

Phone:

(03) 313 1415

Email:

Sales@GoodsDirect2U.co.nz

Web:

www.GoodsDirect2U.co.nz

Address:

589 Mount Thomas Road, RD1,
Fernside, New Zealand 7471

Opening Hours:

9am - 5pm Monday-Friday

10am - 12noon Saturday